



Clean Energy for Low Income Communities Accelerator (CELICA)

CESA Workshop

June 15 2017

CELICA State/Local Partners (38 in Total)

State Partners	Local Government Partners	Community Action, Non-Profits, Utilities
State of California	Chicago, IL	Coulecap Community Action Agency
State of Colorado	Cleveland, OH	Community Action Partnership of Oregon
State of Connecticut, Connecticut Green Bank, Eversource Energy & Illuminating Holdings Corporation	Duluth, MN	Community Action Program of Evansville and Vanderburgh County
District of Columbia	Fresno, CA / Local Government Commission	Hawkeye Area Community Action Program
State of Florida	Gary, IN	Opportunity Council
State of Illinois	Holland, MI	Association for Energy Affordability
State of Iowa	Newark, NJ	Energy Outreach Colorado
Commonwealth of Massachusetts	Oakland, CA	Mercy Housing
State of Michigan	Orlando, FL	Renewable Energy Transition Initiative
State of Minnesota	Rochester, NY	San Antonio Housing Authority
State of Missouri	Chattanooga, TN & EPB Electric Power	Pacific Gas & Electric
NYSERDA	Philadelphia, PA & Philadelphia Energy Authority	Tennessee Valley Authority
State of Tennessee		
State of Washington		

Baselining Tools

Baseline Assessment Guide

Program Catalog

POLICIES	DESCRIBE YOUR POLICY ENVIRONMENT:
	<ul style="list-style-type: none"> What are the key clean energy state or local policies or incentives that currently exist? What are the policies that enable EE in LMI communities? What are the policies that enable solar in LMI communities? What are the policies that enable other types of services for LMI communities? (For above questions, it's useful to break-out e.g., single-family, multifamily, manufactured homes, renters/owners, other).
MARKET & DEMOGRAPHICS	DESCRIBE THE LMI EE, SOLAR, AND SERVICES MARKET AND DEMOGRAPHICS:
	<ul style="list-style-type: none"> How is LMI defined in your organization? What is the estimated number of LMI households participating in EE programs relative to your overall LMI community? What is the estimated number of LMI households participating in solar programs relative to your overall LMI community? What are some key insights that you can draw about your LMI community (e.g. renter v. owner, building type, etc.) from your data profile? Given the market demographics provided in your data profile, which segments of your LMI community most need to be addressed? What barriers would prevent LMI households from participating in an EE programs (e.g., outreach, workforce, funding, financing, and technical)? What barriers would prevent for LMI households from participating in a solar program (e.g., outreach, workforce, funding, financing, and technical)? What is the estimated number of LMI households relative to the overall population that needs health & safety repairs prior to EE and/or solar?
FINANCING	DESCRIBE LMI FINANCING:
	<ul style="list-style-type: none"> Is financing for EE currently available for your LMI community? How does or does it not reach your target LMI community? Is financing for solar currently available for your LMI community? How does or does it not reach your target LMI community? In which sectors could financing support the uptake for EE in LMI communities? In which sectors could financing support the uptake for solar in LMI communities? What existing funding exists to remediate home, health, and safety issues? Are there financial institutions or other lending institutions that have a social mission in your community?
PROGRAMS	DESCRIBE PROGRAMS FOR LMI HOUSEHOLDS:
	<ul style="list-style-type: none"> Identify EE programs for LMI households: Identify solar programs for LMI households: Identify other programs and services for LMI households: What gaps exist in EE programs for LMI households? What gaps exist in solar programs for LMI households?



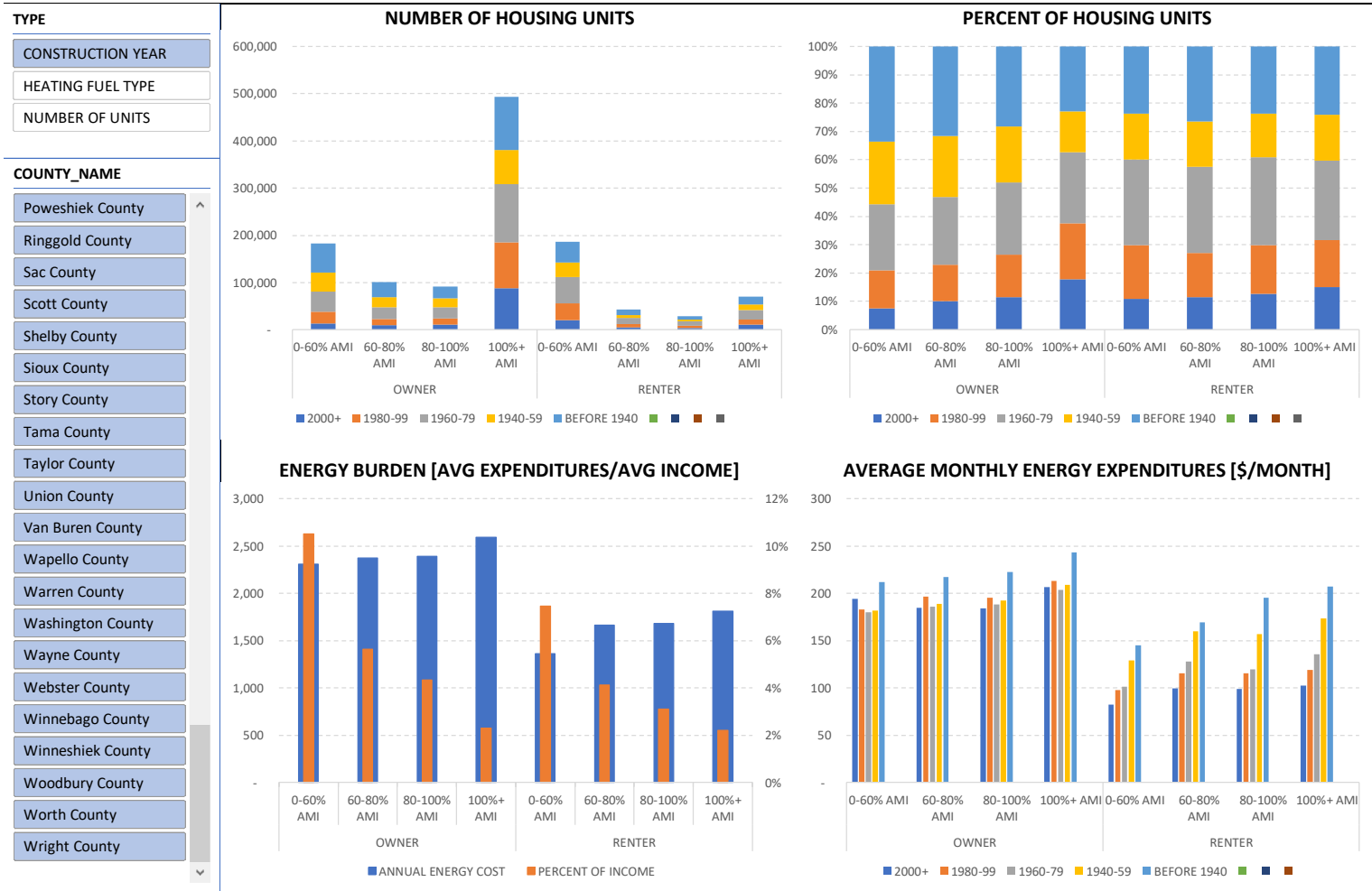
Clean Energy for Low Income Communities Accelerator

Program Catalog

Program Name	Administered by	Type of Program	Funding Source	Residential, Multi, or Non-Residential	How Source Can Be Used	Timeframe When Available	Application Form(s) Available	Budget (Last available)	Number of households served (if available)	Funding Allocated/Practiced	Services Delivered	Income Eligibility	Subsidy Level	More Information	
Solar In Your Community Challenge	U.S. Department of Energy (DOE)	Prize grant	DOE	Residential, Multi, & Non-Residential	\$5 million in technical and financial assistance over 18 months, the challenge requires you to create the energy policy, work to develop and demonstrate innovative business and financial models that expand solar access to underserved communities, proving that these business models can be widely replicated. Teams can apply to participate in the challenge to either develop a pilot project LMI or non-profit solar priority, or design programs to expand solar access in their community.	Performance period May 2017 - October 2018. Final report announced January 2019.	Prize money competition. Competitive application: prize-money-app (2 pages, includes Application deadline: March 17th, 2017).	100 teams will receive \$100k technical assistance. 50 teams will also receive up to \$250,000 from EERC. \$100k will be available to compete for EE in residential.				LMI households, with up to 20% of the energy and benefit targeted to LMI households or non-profit organizations, local or national governments or community organizations with at least 50% of the energy and benefit applied to one of these types of entities.			Click here
Low Income Home Energy Assistance Program (LIHEAP)	U.S. Dept. of Health and Human Services	Grant	HHS	Residential	EE/Retrofit/Fluorescent Measure and Energy Bills	Annually	N/A							Click here	
HUD's Energy Performance Contracting	U.S. Dept. of Housing and Urban Development (HUD)	Energy Performance Contract	HUD	Residential Multi	Innovative financing to design that user can receive from reduced energy consumption to save the cost of building energy conservation measure.	Annually	Retrofit Application							Click here	
HUD's Rehabilitation Mortgage Assistance Section 8	U.S. Dept. of Housing and Urban Development (HUD)	Loan	HUD	Residential Multi	Establish benchmark and financing to finance both the purchase and renovation of a home on the part of the rehabilitation through a 10-year mortgage or to finance the rehabilitation of their existing home.	Annually	Submitted through an FHA Approved Lender, Referral							Click here	
FHA Power-Saver Loan Program	U.S. Dept. of Housing and Urban Development (HUD)	Loan	HUD	Residential	EE/Retrofit	Annually	Retrofit Application							Click here	
FHA Energy Efficient Mortgage	U.S. Dept. of Housing and Urban Development (HUD)	Loan	HUD	Residential	EE/Retrofit/Fluorescent Measure and Energy Bills	Annually	Retrofit Application							Click here	
Reero360	U.S. Dept. of Housing and Urban Development (HUD)	Initiative	HUD	Residential Multi	Investment in energy efficiency and renewable energy technology. The 200,000 households are the size of millions of dollars, solar and energy efficiency community generation potential. Support of renewable energy technology such as Solar PV and Solar thermal, wind, geothermal, small hydropower.									Click here	
Community Development Block Grants (CDBGs)	U.S. Dept. of Housing and Urban Development (HUD)	Grant	HUD		This program provides communities with a source of financing for economic development, housing rehabilitation, public facilities, and other social development projects, including renewable energy addition, efficiency and local government's ability to address the needs of their CDBGs is to be directly operated and managed through a public authority and a community development enterprise capable of receiving and using the funds.									Click here	
Section 108 Guarantee Program	U.S. Dept. of Housing and Urban Development (HUD)	Loan	HUD		Section 108 Community Development Block Grant funding can be used for clean energy and energy efficiency projects.									Click here	
Energy Conservation	U.S. Dept. of Housing and Urban Development (HUD)				HUD's conservation program funds many energy efficiency projects from EERC that are allocated by the housing authority to meet the needs of its tenants and the community. The program is										

State LMI Energy Data Profiles

State of Iowa (Example)



LMI Community Solution Pathways

Solutions in . . .



Residential buildings



Community networks / assets



Commercial buildings



Utility networks

Energy efficiency + rooftop solar combo

Leverage or expand *existing* energy assistance programs

- **WAP/LIHEAP**
Wx plus solar
- **Municipality**
residential/commercial energy campaigns
- **Utility**
integrated bill assistance and demand side mgmt
- **Affordable housing renovations**
tax credit financing, ESPCs

Support *emerging* program/business models

- Solar project aggregation / bulk purchasing
- Blend of financing and funding for energy efficiency + solar standard offerings
- Volunteers / donations / crowdsourcing

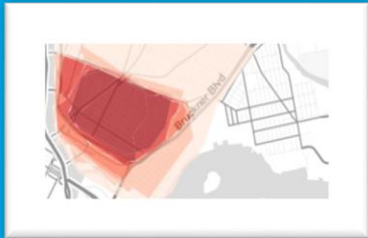
LMI community solar with EE linkages



LMI participant carve outs from community solar programs



Non-profit-driven models with private tax-credit-financing partners



LMI community dedicated solar projects



Brownfields used for community/shared solar demonstration projects

Link with energy efficiency to engage participants, improve impact, and reduce costs:

1. Promote, incentivize or require Wx by participants
2. Wx homes are a qualified pipeline for LMI solar subscribers

Partner Example: Michigan

- State of Michigan
 - Community solar demonstration projects
 - Combines WAP/LIHEAP, utility, community foundation funding
 - Proof of concept to secure additional charge for market-rate Community Solar patrons to contribute to a longer term slush fund